

# A MOTHER'S STRENGTH

LEADING  
TRANSFORMATION  
IN HER COMMUNITY

PAGE 3

*Following Jesus where the need is greatest*

---

EMERGENCY VACCINATION  
PROGRAM KEEPS POLIO  
OUTBREAK OUT OF SYRIAN  
REFUGEE SETTLEMENTS IN  
LEBANON PAGE 2

---

THE GREAT CANADIAN YOUTH  
CHALLENGE KICKS OFF! YOUTH  
ACROSS CANADA SUPPORT THE  
TRAINING FOR RURAL FARMERS  
IN INDIA PAGE 5

# LISTENING TO SERVE EFFECTIVELY

Paying attention to community needs is an important part of Tearfund's approach to working in communities around the world. We do not simply implement a program that we've decided upon in Canada. We work with local church-based partners, listen to the needs of the community, gather information about progress and adapt our programs, if needed - for maximum impact.

This was the case recently in Lebanon. With your support, we are providing, maternal health services, medicine and healthcare for chronically ill Syrian refugees in Lebanon's Bekaa Valley. 300,000 Syrians have set up informal settlements there and the health needs are overwhelming. The clinics are also open to vulnerable Lebanese and they have helped build harmony between the refugees and their hosts.

Late last year an outbreak of polio in Syria threatened to spill over into Lebanon, especially given the movement of refugees as fighting and violence continued in that country. Tearfund supported staff from seven clinics in the Bekaa valley jumped in to help with a much needed vaccination campaign. Staff made visits tent by tent to patient families to ensure that all children were accounted for.

This is the heart of how we are following Jesus where the need is greatest. Just as He saw our greatest need for salvation and responded by going to the cross; so we strive to respond to the greatest needs of the world's poor in partnership with local church-organizations and with you. Please read on for more encouraging stories of our partnership with you.



**WAYNE JOHNSON**

President & CEO  
wjohnson@tearfund.ca  
416.707.9066





Clinic staff went out into the community to make sure every child was immunized.

“STAFF COME IN AT LEAST AN HOUR EARLY. THEY ARE COMMITTED TO ENSURING A POLIO OR MEASLES OUTBREAK DOES NOT HAPPEN IN THEIR COUNTRY, AND SEE IT MORE AS A PERSONAL ENDEAVOR THAN A WORK-RELATED MATTER.”



**MICHELLE DUPUIS**  
Tearfund Humanitarian  
Response Program Officer

## COMMUNITY HEALTH

**7** CLINICS

**51,985** RECEIVED PRIMARY HEALTH CARE

**32,924** IMMUNIZED (11,332 AT THE CLINICS & 21,592 IN THE COMMUNITY)

**1,525** MOTHER RECEIVING PREGNANCY & POST-NATAL CARE

**447** HEART DISEASE & DIABETES PATIENTS CARED FOR



## A MOTHER'S STRENGTH

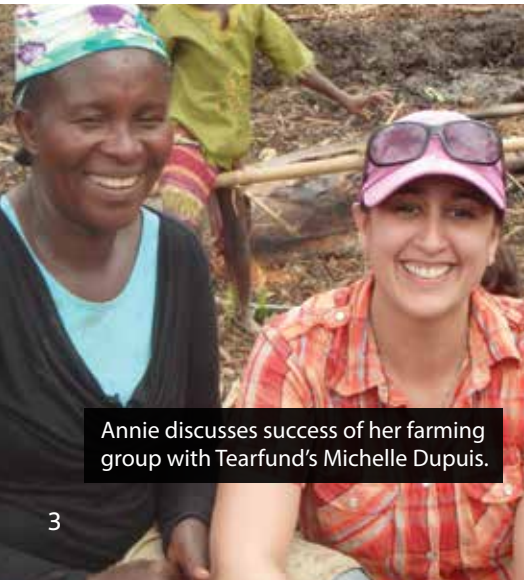
Annie Sulunteh's challenges, raising children alone in post civil war Liberia could have overwhelmed her. Before the Tearfund supported food security project reached her community of Yowee, in Zota County, Liberia; Annie never had enough food for her basic needs, and she had dreams of a better future for her eight children - five girls and 3 boys.

Four years ago, Tearfund Canada and the Association of Evangelicals in Liberia (AEL), offered community members in Yowee training and start-up support for swamp rice farming. A method that could produce more food in Liberia's rainforest climate, than traditional broadcast methods. Annie not only joined the group but

volunteered to chair the group - quite unusual for a woman in a rural Liberian community.

Under Annie's leadership the Yowee group of farmers became one of the most successful groups in Zota county. With the help of neighbours, Annie herself developed six plots of swamp rice AND developed vegetable plots to improve her children's nutrition and to sell produce for income.

Today, six of Annie's children are attending school and production of swamp rice and vegetables has increased in the 15 communities of Zota County, not only for dietary diversity, but for market value.



Annie discusses success of her farming group with Tearfund's Michelle Dupuis.

"THANK YOU FOR GIVING ME THE OPPORTUNITY TO OWN A RICE FARM. NOW I CAN FEED MY FAMILY AND PROVIDE THE ASSISTANCE TO MY CHILDREN, WHILE THEY GET SCHOOLING THAT IS NOT AVAILABLE IN YOWEE."

**ANNIE SULUNTEH**  
Liberian Farmer

Vegetables have become a source of income for families, allowing them to undertake meaningful ventures like roofing of homes, paying school fees and taking care of other financial needs of the family. Farmers report that their neighbours are also producing more vegetables now that they've seen the benefits! The community has been transformed.

*"When I first came to Zota County, many of the children were sick and malnourished, and none of them were enrolled in school. Thanks to the nutrition intervention we led, I no longer even see children in the community! All of the money the parents have saved from hospital bills has allowed them to send their children to school in town!"*

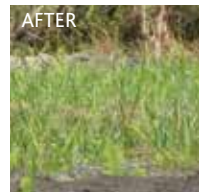
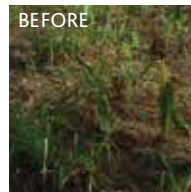
**AMELIA YORMIE**

AEL, Nutritionist



Annie's dreams for her children are becoming a reality thanks to her hard work, your support and compassionate service of the church.

With your support we can work with the Liberian church to support community transformation in post-war Liberia.

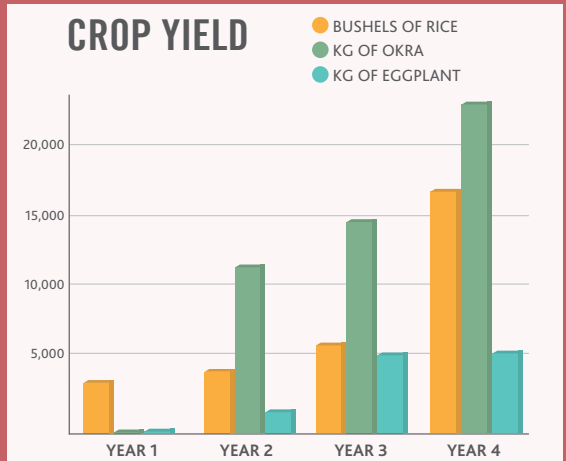


## YOU ARE MAKING A DIFFERENCE

15 communities in Zota county, Liberia now have access to sufficient, safe, nutritious food, and community members have surplus to sell for income.

### COMMUNITY IMPACT

Success in 1 Village creates a ripple effect in surrounding villages as more farmers get involved. The number of swamp rice plots has increased from 150 to 918 in just four years.





A PROJECT OF

**tearfund**  
CANADA

**Canadian  
Foodgrains  
Bank**  
A Christian Response  
to Hunger

Churches across Canada have joined The Great Canadian Youth Challenge to make a difference!

### WHY SIGN UP YOUR YOUTH GROUP?

1. To engage youth in fun, creative and thought provoking activities that will spark global consciousness and demonstrate the importance of going beyond empathy to positive action.
2. Provide a unique educational experience for your youth group. They will learn the causes and solutions to global poverty, about life for rural poor in other parts of the world, and how God's creation provides for his children.

Until June 17th, Youth groups will compete to see who can raise the most money in 2 competition categories (Top Fundraisers and Most Creative Fundraisers).

Representatives from the winning teams, will receive an all expenses paid - Canadian Harvest Experience on labour day weekend and learn more about how the money they've raised will transform life for the rural poor in India.

FIND OUT MORE AT [MYVIRTUALACRE.CA](http://MYVIRTUALACRE.CA) OR CONNECT WITH DON MILLER: 613-371-6246 | [DMILLER@TEARFUND.CA](mailto:DMILLER@TEARFUND.CA)

### ENGAGE YOUR GROUP

If you would like your youth group or whole church to hear more about how lives are being changed and communities transformed, a Tearfund speaker can visit your church. All our speakers can present from five minutes to 50 minutes and share what God is doing worldwide through his global church.

FIND A SPEAKER AT [TEARFUND.CA/CONNECT](http://TEARFUND.CA/CONNECT)



Baida Pahariya beams proudly showing his yield after training from Tearfund & EFICOR.

Funds raised through the Youth Challenge will benefit farmers from the Suara people group in the Rayagada district of India. Farmer's like Baida Pahariya live in isolated forest and hilly areas where they lack government services. Like his neighbours, Mr. Pahariya faced very low agricultural production from the largely rocky dry depleted soils, and the few lowland plots that could be irrigated.

In order to improve the crop yields and family nutrition in the area Tearfund Canada and

local church partners EFICOR have introduced line sowing and kitchen garden farm methods with funding from the Canadian Foodgrains Bank. As one of the farmers who received training, Baida Pahariya is now growing papaya and maize for food and to sell for income. More importantly he and his family now have have a defense against permanent poverty. All thanks to gifts from caring Christians delivered through the church.



**THE TEARFUND SUPPORTED PROJECT  
AMONG THE SAURA PEOPLE WILL**

**TRAIN 515 FARMERS  
IMPROVE 2,411 LIVES**

**TRANSFORM  
27 VILLAGES**

**COST: \$300 PER FAMILY**



## PRAY WITH US

- Pray for victims of war and famine in South Sudan, we are extending food distribution there. Pray that the most vulnerable will continue to be supported with Food aid and Medical care.
- Pray for youth across Canada taking part in the Youth Challenge. Pray that God will use this to ignite a passion for the poor in them.
- Pray for the needs assessments taking place in West Africa, that Tearfund and local partner staff will follow God's lead on where to serve next.
- Pray for over 5,000 farmers receiving training in conservation agriculture in 2018 in the Democratic Republic of Congo, Tanzania, Ethiopia and India.
- Pray for Rohingya and Syrian refugees living in temporary camps. Pray that they will find permanent homes over the coming year.


*"Elijah was a human being, even as we are. He prayed earnestly that it would not rain, and it did not rain on the land for three and a half years."*  
-James 5:17





**tearfund**

CANADA

previously  
World Relief Canada

 [tearfundcanada](https://www.facebook.com/tearfundcanada)

 [tearfundcanada](https://twitter.com/tearfundcanada)

 [tearfundcanada](https://www.instagram.com/tearfundcanada)

[www.tearfund.ca](http://www.tearfund.ca)

310 - 600 Alden Road,  
Markham, ON L3R 0E7  
[connect@tearfund.ca](mailto:connect@tearfund.ca)  
905-415-8181